



NC DEPARTMENT OF TRANSPORTATION
 DIVISION OF HIGHWAYS
 BRIDGE MANAGEMENT UNIT

ATTENTION

PRIORITY MAINT. ISSUED.
 TEMP. REPAIR BM. 1 SPAN 2.
 TEMP. REPAIR TO BENT 1 CAP.

BRIDGE INSPECTION REPORT

INSPECTION TYPE: Routine Inspection

COUNTY GASTON BRIDGE NUMBER 350028 INSPECTION CYCLE 2 YRS
 ROUTE SR2416 ACROSS CROWDER'S CREEK M.P. 0

LOCATION 0.2 MI. E. JCT. US321

SUPERSTRUCTURE TIMBER DECK ON I-BEAMS

SUBSTRUCTURE END & INTERIOR BENTS:TIMBER CAPS & PILES, TIMBER BULKHEADS

SPANS 1@30'4, 1@30'2, 1@30'4

LONGITUDE 81° 11' 35.29" LATITUDE 35° 10' 18.63"

INSPECTION DATE 06/18/2014 PRESENT CONDITION POOR

PRESENT POSTING SV 7 TTST 7 SV 16 TTST 21 PROPOSED POSTING _____

OTHER SIGNS PRESENT 4 DELINEATORS, 2 NARROW BRIDGE

Fracture Critical No
 Temporary Shoring No
 Scour Critical No
 Scour POA No



SIGN NOTICE ISSUED FOR	NUMBERED REQUIRED
<u>No</u> WEIGHT LIMIT	_____
<u>No</u> DELINEATORS	_____
<u>No</u> NARROW BRIDGE	_____
<u>No</u> ONE LANE BRIDGE	_____
<u>No</u> LOW CLEARANCE	_____

WEST APPROACH

NATIONAL BRIDGE INVENTORY----- STRUCTURE INVENTORY AND APPRAISAL

Run Date: 07/02/2014

IDENTIFICATION

(1) STATE NAME -NORTH CAROLINA BRIDGE **350028**
 (8) STRUCTURE NUMBER(FEDERAL) 00000000710028
 (5) INVENTORY ROUTE (ON/UNDER) - ON 31024160
 (2) STATE HIGHWAY DEPARTMENT DISTRICT 1
 (3) COUNTY CODE 71 (4) PLACE CODE 0
 (6) FEATURE INTERSECTED - CROWDER'S CREEK
 (7) FACILITY CARRIED SR2416
 (9) LOCATION 0.2 MI. E. JCT. US321
 (11) MILEPOINT 0
 (16) LAT 35° 10' 18.63" (17) LONG 81° 11' 35.29"
 (98) BORDER BRIDGE STATE CODE PCT SHARE
 (99) BORDER BRIDGE STRUCTURE NO

SUFFICIENCY RATING = 8.68
 STATUS = Structurally Deficient

CLASSIFICATION CODE

(112) NBIS BRIDGE SYSTEM - YES
 (104) HIGHWAY SYSTEM Is not on NHS 0
 (26) FUNCTIONAL CLASS - Minor Collector 08
 (100) STRAHNET HIGHWAY - Not a STRAHNET Route 0
 (101) PARALLEL STRUCTURE - No Parallel Structure N
 (102) DIRECTION OF TRAFFIC - 2-way Traffic 2
 (103) TEMPORARY STRUCTURE -
 (110) DESIGNATED NATIONAL NETWORK - Not on the National Network 0
 (20) TOLL On Free Road 3
 (31) MAINTAIN - State Highway Agency 01
 (22) OWNER - State Highway Agency 01
 (37) HISTORICAL SIGNIFICANCE - Not Eligible 5

STRUCTURE TYPE AND MATERIAL

(43) STRUCTURE TYPE MAIN: Steel
 TYPE - Stringer Multibeam or Girder CODE 302
 (44) STRUCTURE TYPE APPR :
 TYPE - CODE 000
 (45) NUMBER OF SPANS IN MAIN UNIT 3
 (46) NUMBER OF APPROACH SPANS
 (107) DECK STRUCTURE TYPE - 8 CODE
 (108) WEARING SURFACE / PROTECTIVE SYSTEM :
 (A) TYPE OF WEARING SURFACE - CODE
 (B) TYPE OF MEMBRANE - CODE
 (C) TYPE OF DECK PROTECTION - CODE

CONDITION CODE

(58) DECK 5
 (59) SUPERSTRUCTURE 4
 (60) SUBSTRUCTURE 5
 (61) CHANNEL & CHANNEL PROTECTION 6
 (62) CULVERTS N

LOAD RATING AND POSTING CODE

(31) DESIGN LOAD Unknown 0
 (63) OPERATING RATING METHOD - Load Factor 1
 (64) OPERATING RATING - HS-7 12
 (65) INVENTORY RATING METHOD - Load Factor 1
 (66) INVENTORY RATING - HS-4 7
 (70) BRIDGE POSTING - Posting Required 0
 (41) STRUCTURE OPEN, POSTED ,OR CLOSED P
 DESCRIPTION - Posted for Load

AGE AND SERVICE

(27) YEAR BUILT 1963
 (106) YEAR RECONSTRUCTED
 (42) TYPE OF SERVICE : ON - Highway
 UNDER - Waterway CODE 15
 (28) LANES: ON STRUCTURE 2 UNDER STRUCTURE 0
 (29) AVERAGE DAILY TRAFFIC 5800
 (30) YEAR OF ADT 2012 (109) TRUCK ADT PCT 6%
 (19) BYPASS OR DETOUR LENGTH 2 MI

APPRAISAL CODE

(67) STRUCTURAL EVALUATION 3
 (68) DECK GEOMETRY 2
 (69) UNDERCLEARANCES, VERTI & HORIZ N
 (71) WATERWAY ADEQUACY 7
 (72) APPROACH ROADWAY ALIGNMENT 8
 (36) TRAFFIC SAFETY FEATURES 0000
 (113) SCOUR CRITICAL BRIDGES 5

GEOMETRIC DATA

(48) LENGTH OF MAXIMUM SPAN 30 FT
 (49) STRUCTURE LENGTH 91 FT
 (50) CURB OR SIDEWALK: LEFT .3 FT RIGHT .3 FT
 (51) BRIDGE ROADWAY WIDTH CURB TO CURB 19.167 FT
 (52) DECK WIDTH OUT TO OUT 20.083 FT
 (32) APPROACH ROADWAY WIDTH (W/SHOULDERS) 18 FT
 (33) BRIDGE MEDIAN - No Median CODE 0
 (34) SKEW 0° (35) STRUCTURE FLARED 0
 (10) INVENTORY ROUTE MIN VERT CLEAR 999.9 FT
 (47) INVENTORY ROUTE TOTAL HORIZ CLEAR 19.167 FT
 (53) MIN VERT CLEAR OVER BRIDGE RDWY 999.9 FT
 (54) MIN VERT UNDERCLEAR REF Not a Highway or Railroad 0 FT
 (55) MIN LAT UNDERCLEAR RT REF Not a Highway or Railroad 000 FT
 (56) MIN LAT UNDERCLEAR LT REF - 000 FT

PROPOSED IMPROVEMENTS

(75) TYPE OF WORK - CODE
 (76) LENGTH OF STRUCTURE IMPROVEMENT
 (94) BRIDGE IMPROVEMENT COST
 (95) ROADWAY IMPROVEMENT COST
 (96) TOTAL PROJECT COST
 (97) YEAR OF IMPROVEMENT COST ESTIMATE
 (114) FUTURE ADT 11600 (115) YEAR FUTURE ADT 2025

INSPECTIONS

(90) INSPECTION DATE 06/18/2014

NAVIGATION DATA

(38) NAVIGATION CONTROL - No Navigational Control CODE 0
 (111) PIER PROTECTION - CODE
 (39) NAVIGATION VERTICAL CLEARANCE 0
 (116) VERT - LIFT BRIDGE NAV MIN VERT CLEAR FT
 (40) NAVIGATION HORIZONTAL CLEARANCE 0 FT

(92) CRITICAL FEATURE INSPECTION : (93) CFI DATE
 A) FRACTURE CRIT DETAIL - NO A)
 B) UNDERWATER INSP - NO B)
 C) OTHER SPECIAL INSP NO C)
 SCOUR

BRIDGE MANAGEMENT UNIT

DATA ON EXISTING STRUCTURE

Run Date: 07/02/2014

COUNTY : GASTON DIVISION : 12 DISTRICT : 1 STRUCTURE NUMBER : 350028 LENGTH : 91 FEET

ROUTE CARRIED : SR2416 FEATURE INTERSECTED : CROWDER'S CREEK

LOCATED : 0.2 MI. E. JCT. US321 BRIDGE NAME : CITY :

FUNC. CLASS : 08 SYST.ON : NFA SYST.UNDER : NFA ADT & YR : 5800 2012 RAIL TYPE : LT 227 RT 227

BUILT : 1963 BY : BMU PROJ : FED.AID PROJ : DESIGN LOAD : Unknown

REHAB : BY : BMU PROJ : 5.9751 ALIGNMENT : TAN SKEW : 90 LANES : ON 2 UNDER 0

NAVIGATION : VC 0 FT HC 0 FT HT. CRN. TO BED : 17 FT WATER DEPTH : 1 FT

SUPERSTRUCTURE : TIMBER DECK ON I-BEAMS

SUBSTRUCTURE : E.BTS. & INT.BTS:TIMBER CAPS/TIMBER PILES @ 6' CTS.

SPANS : 1@30'-4, 1@30'-2, 1@30'-4

BEAMS OR GIRDERS : 10 LINES 30" I-BEAMS @ 2' CENTERS

FLOOR : 4X8 TIM/3 AWS ENCROACHMENT : DECK (OUT TO OUT) : 20.083 FT

CLEAR ROADWAY : 19.167 FT BETWEEN RAILS : 19.833 FT SIDEWALK OR CURB : LT .3 FT RT .3 FT

VERT.CL.OVER : 999.9 FT

INV.RTG. : HS-4 OPE.RTG. : HS-7 CONTR.MEMBER : Int.bmsSpB POSTED : SV 7 TTST 7 DATE 08/10/2010

SYSTEM : Secondary S.R. Route GREEN LINE ROUTE : N

UNDER ROUTES AND CLEARANCES

REMARKS :

BRIDGE INSPECTION RECORD AND SUMMARY

INSPECTION TYPE Routine Inspection
 BRIDGE NO. 350028 COUNTY GASTON ROUTE SR2416 OVER CROWDER'S CREEK
 STRUCTURE TYPE TIMBER DECK ON I-BEAMS
 ROUTE ORIENTATION W - E SPANS 1@30'4, 1@30'2, 1@30'4

EVALUATION CODES: CRITICAL (C, 0 - 3); POOR (P, 4); FAIR (F, 5, 6); GOOD (G, 7 - 9)

INSPECTION ITEM			ITEM 61		
DECK ITEMS		GRADES			
1. WEARING SURFACE		P	45. CHANNEL & CHANNEL PROT.	a. WATERWAY	G
2. DECK NO. OF EA TYPE SPN GRADE RATES SI & A ITEM 58		3		b. ALIGNMENT	F
a. CONCRETE		F		c. SCOUR	F
b. TIMBER				d. SLOPE PROT., RIP-RAP, DIKES, ETC.	
c. STEEL PLANK			50. APPROACH ROADWAY CONDITION		F
d. OPEN GRID			51. APPROACH SLABS		
3. RAILING			52. PAINT SYSTEM CODE A		P
a. CONCRETE			53. UTILITIES		
b. TIMBER		F	54. RESPONSE TO LIVE LOAD		G
c. ALUMINUM			55. ESTIMATED REMAINING LIFE		8
d. STEEL					
4. CURBS, WHEELGUARDS, PARAPETS, MEDIANS		F			
5. WALKWAYS (ON OR ATTACHED TO STRUCTURE)			60. REGULATORY SIGN NOTICE ISSUED		NO
6. DECK EXP JTS. OR DEVICES. NO. OF EACH			61. PROMPT-ACTION NOTICE ISSUED		YES
a. STEEL PL OR FINGER			62. PRESENTLY POSTED		YES
b. MISC PREFAB			63. TOT. FIELD INSP TIME (INCLUDE WRITE UP)(MAN HR)		7
c. COMPRESSION SEAL			64. TOTAL SNOOPER INSP. TIME (HRS)		
d. STANDARD JOINTS			65. TOTAL TRAFFIC CONTROL TIME (MAN HRS)		
e. OPEN JOINTS					
7. DECK DEBRIS (INCLUDES EXCESS SAND/GRAVEL)		F			
			70. SI&A GENERAL CONDITION RATINGS		
SUPER STR. (FM. 1 (90)B TRUSS) ITEM 59			a. DECK	ITEM 58	5
10. LONGITUDINAL BEAMS OR GIRDERS		P	b. SUPERSTRUCTURE	ITEM 59	4
11. LONGITUDINAL JOIST OR STRINGERS			c. SUBSTRUCTURE	ITEM 60	5
12. INT. DIAP'S, X-FRAMES, BRACING & CONN'S		F	d. CHANNEL & CHANNEL PROT.	ITEM 61	6
13. END DIAP'S, CURTAIN WALLS, & CONN'S					
14. FLOOR BEAMS AND CONNECTIONS			71. SI&A FIELD APPRAISAL RATINGS		
15. BEARING ASSEMBLIES (INCLUDING MISALIGN)		F	a. WATERWAY ADAQUACY		7
16. DRAINAGE SYSTEM (ON STRUCTURE)		G	b. APPR. RDWY. ALIGNMENT		8
17. MOVABLE SPAN MACHINERY					
			72. FIELD SCOUR EVALUATION		U
SUB STR. ITEMS. ITEM 60 (INCLUDE SCOUR)					
35. TIM SUB STR.			USE OF INSP. ACCESSIBILITY EQUIPMENT		
a. ABUT. & INT. BENT CAPS & RISERS		G	SNOOPER (CODE S, 4, OR N)		HRS NO
b. PILES, POST, SILLS, & BRACING		F	LADDER		NO
c. BULKHEADS, WING'S, & TIE BACKS		F	BUCKET TRUCK		NO
36. CONC SUB STR.			BOAT		NO
a. ABUT. & INT. BENT CAPS			OTHER		NO
b. ABUT. & BENT COL'S BREASTWALLS					
c. ABUT. & INT. BENT PILES					
d. BACKWALLS, WING'S, RETAIN. WALLS					
e. ABUT. & BENT FOOTINGS & SILLS					
37. STEEL SUB STR.			SPECIAL INSPECTION REQUESTED FOR		
a. ABUT. & INT. BENT CAPS & RISERS					
b. PILES, BRACING, AND BULKHEADS					
38. FOUNDATION PILES TYPE MATERIAL			NOTE		
39. SLOPE PROT., RIP-RAP (INCLUDE DRAINAGE)					
40. FENDER SYSTEMS			80. INSPECTED BY:		<i>Hand Path</i>
41. DRIFT		G	81. REVIEWED BY:		

Bridge I&A Form 1(82)H		<h1>FIELD INSPECTION REPORT</h1> <p><u>Bridge Inspection & Analysis</u></p>	
State of North Carolina Dept. of Transportation Division of Highways			
Team Leader DEREK RICKUS			
Assisted By EAP			
Item No.	Grade		
1	P	THE ASPHALT WEARING SURFACE IS BREAKING OUT IN ALL THREE SPANS, DECK IS REBOUNDING. LARGE PATCHING AND ASPHALT WEARING SURFACE BREAKING OUT IN THE RT. LANE AT THE EAST END OF SPAN 3.	
2b	F	THE TIMBER DECK IS SOFT AND REBOUNDING UNDER LIVE LOADS. NOTE ASPHALT WEARING SURFACE CRACKING AND BREAKING OUT.	
3b	F	THE NORTHEAST PANEL BD. MISSING.	
7	F	VEG. ALONG WHEELGUARDS HINDERING DRAINAGE.	
10	P	<p>THE BMS. IN ALL THREE SPANS HAVE LAYERED RUST PRESENT ALONG THE TOP AND BOTTOM FLGS AND HAVE REDUCED DOWN TO A 1/8" FLG. THE WEB FACES HAVE SURFACE RUST WITH PITTING. THE WEB FACED HAVE REDUCED DOWN TO A 3/16". BEAM. 4 IN SPAN 3 NEAR DIAPH. HAS REDUCED DOWN TO A KNIFE EEDGE FOR 6' AT 1ST DIAPH. 10' FROM THE BEAM. END (EAST END). A PRIORITY MAINT. HAS BEEN ISSUED.</p> <p>BEAM. 6 IN SPAN 3 HAS SECTION LOSS ALONG THE BOTTOM FLG. FOR 10" FROM 12' FROM THE EAST END OF THE BEAM., THE BEAM. FLGS HAS REDUCED DOWN TO A KNIFE EDGE FOR MOST OF THE SPAN LENGTH. A PRIORITY MAINT. IS BEING ISSUED.</p> <p>BEAM. 6 IN SPAN 3 HAS AREAS OF COMPLETE LOSS IN THE WEB. AT 12' FROM THE EAST END OF THE BEAM. THE LOSS IS 6" TO 8" LONG X 2" HIGH, NOTE THE WEB FACE IS THIN THRU-OUT. APRIORITY MAINT. BEING ISSUED.</p> <p>THERE IS COMPLETE LOSS IN BEAM. 6 SPAN 3 AT 9' FROM THE EAST END OF BEAM. THE LOSS IS 3" LONG X 1/2" HIGH JUST ABOVE THE BOTTOM FLG. A PRIORITY MAINT. IS BEING ISSUED.</p> <p>BEAM. 1 IN SPAN 2 AT BENT 2 HAS A PAST REPAIR WHERE THEY CUT AWAY DETERIORATED SECTION AND WELDED IN A SALVAGE SECTION. SALVAGE PIECE IS 6" HIGH X 18" LONG.</p> <p>CORROSION ON BEAM FLANGES AND LOWER WEBS HAS FLANGES DOWN TO 3/16 INCH IN NUMEROUS AREAS</p>	
10A	NO	NO CURVED GIRDERS	
12	F	DIAPHS. HAVE SURFACE RUST AND PAINT. PEEL.	
15	F	THE BRG. PLATES ARE SHOWING SURFACE RUST PRESENT.	

Bridge I&A Form 1(82)H State of North Carolina Dept. of Transportation Division of Highways		FIELD INSPECTION REPORT <u>Bridge Inspection & Analysis</u>	
Team Leader DEREK RICKUS			
Assisted By EAP			
Item No.	Grade		
52	P	PAINT PEELING	
35c	F	TIMBER BULKHEAD BDS. ALONG ABUT. 1 RT. END HAS FILL DIRT EXPOSED TO THE RT. OF THE EXTERIOR PILE.	
45b	F	STREM FLOW TOWARD AND ALONG BENT 2.	
45c	F	SCOUR ALONG BT. 2 FOR 20' LONG X 2' HIGH AND IS WITHIN 2' OF TIMBER PILES.	
50	F	THE WEST APPROACH SETTLED ALONG THE FILLFACE.	
62	YES	16 AND 21	



BRIDGE INSPECTOR'S RECOMMENDATION FOR MAINTENANCE REPAIRS

Bridge: 350028

County GASTON

Date: 06/18/2014

These Repairs Should Be Made Within Twelve Months From Date Of This Inspection

MMS Code	Description of Function	Unit	Quantity	Remarks	Est. Cost
 3314	Maintain Steel Superstructure Components	LF	8	BEAM. 6 IN SPAN 3 HAS SECTION LOSS ALONG THE BOTTOM FLG. FOR 10" FROM 12' FROM THE EAST END OF THE BEAM., THE BEAM. FLGS HAS REDUCED DOWN TO A KNIFE ED BEAM. 6 IN SPAN 3 HAS AREAS OF COMPLETE LOSS IN THE WEB. AT 12' FROM THE EAST END OF THE BEAM. THE LOSS IS 6" TO 8" LONG X 2" HIGH, NOTE THE WEB FACE THERE IS COMPLETE LOSS IN BEAM. 6 SPAN 3 AT 9' FROM THE EAST END OF BEAM. THE LOSS IS 3" LONG X 1/2" HIGH JUST ABOVE THE BOTTOM FLG. A PRIORITY MAINT.	
 3314	Maintain Steel Superstructure Components	LF	6	BEAM. 4 IN SPAN 3 NEAR DIAPH. HAS REDUCED DOWN TO A KNIFE EEDGE FOR 6' AT 1ST DIAPH. 10' FROM THE BEAM. END (EAST END). A PRIORITY MAINT. HAS BEEN ISSUED.	
2816	Asphalt Surface Repair or Replacement	SY	11	THE WEST APPROACH SETTLED ALONG THE FILLFACE.	
2816	Asphalt Surface Repair or Replacement	SY	202	THE ASPHALT WEARING SURFACE IS BREAKING OUT IN ALL THREE SPANS, DECK IS REBOUNDING.	
3316	Maint to Timber Handrail	LF	3	THE NORTHEAST PANEL BD. MISSING.	
3376	Clean/Wash Bridge Decks	SF	182	VEG. ALONG WHEELGUARDS HINDERING DRAINAGE.	

Key

 Priority Maintenance Item

 Critical Finding Item

 Priority Maintenance Level Not Determined

BRIDGE INSPECTOR'S RECOMMENDATION FOR PRIORITY MAINTENANCE REPAIRS

Bridge: 350028

County GASTON

THE FOLLOWING MAINTENANCE ITEMS HAVE BEEN SUBMITTED IN CONJUNCTION WITH A PRIORITY MAINTENANCE REQUEST

MMS Code	MMS Description	Quantity
3314	Maintain Steel Superstructure Components	8 LF
Location:		
Beams and Girders Bent/Span No. 3 BM.6 IN SPAN 3		
Priority Level	Status	
Priority Maintenance	Division Bridge Maintenance Notification Received	
Submitted Date:	Submitted By:	Assisted By:
06/18/2014	DEREK RICKUS	ERIC PATTERSON
Details		
<p>BEAM. 6 IN SPAN 3 HAS SECTION LOSS ALONG THE BOTTOM FLG. FOR 10" FROM 12' FROM THE EAST END OF THE BEAM., THE BEAM. FLGS HAS REDUCED DOWN TO A KNIFE ED BEAM. 6 IN SPAN 3 HAS AREAS OF COMPLETE LOSS IN THE WEB. AT 12' FROM THE EAST END OF THE BEAM. THE LOSS IS 6" TO 8" LONG X 2" HIGH, NOTE THE WEB FACE THERE IS COMPLETE LOSS IN BEAM. 6 SPAN 3 AT 9' FROM THE EAST END OF BEAM. THE LOSS IS 3" LONG X 1/2" HIGH JUST ABOVE THE BOTTOM FLG. A PRIORITY MAINT.</p>		

MMS Code	MMS Description	Quantity
3314	Maintain Steel Superstructure Components	6 LF
Location:		
Beams and Girders Bent/Span No. 3 BEAM 4		
Priority Level	Status	
Priority Maintenance	Division Bridge Maintenance Notification	
Submitted Date:	Submitted By:	Assisted By:
06/18/2014	DEREK RICKUS	ERIC PATTERSON
Details		
<p>BEAM. 4 IN SPAN 3 NEAR DIAPH. HAS REDUCED DOWN TO A KNIFE EEDGE FOR 6' AT 1ST DIAPH. 10' FROM THE BEAM. END (EAST END). A PRIORITY MAINT. HAS BEEN ISSUED.</p>		



THE BMS. IN ALL THREE SPANS HAVE LAYERED RUST PRESENT ALONG THE TOP AND BOTTOM FLGS AND HAVE REDUCED DOWN TO A 1/8" FLG. THE WEB FACES HAVE SURFACE RU



BEAM. 6 IN SPAN 3 HAS SECTION LOSS ALONG THE BOTTOM FLG. FOR 10" FROM 12' FROM THE EAST END OF THE BEAM., THE BEAM. FLGS HAS REDUCED DOWN TO A KNIFE ED



BEAM. 6 IN SPAN 3 HAS AREAS OF COMPLETE LOSS IN THE WEB. AT 12' FROM THE EAST END OF THE BEAM. THE LOSS IS 6" TO 8" LONG X 2" HIGH, NOTE THE WEB FACE



THERE IS COMPLETE LOSS IN BEAM. 6 SPAN 3 AT 9' FROM THE EAST END OF BEAM. THE LOSS IS 3" LONG X 1/2" HIGH JUST ABOVE THE BOTTOM FLG. A PRIORITY MAINT.



BEAM. 1 IN SPAN 2 AT BENT 2 HAS A PAST REPAIR WHERE THEY CUT AWAY DETERIORATED SECTION AND WELDED IN A SALVAGE SECTION. SALVAGE PIECE IS 6" HIGH X 18"



CORROSION ON BEAM FLANGES AND LOWER WEBS HAS FLANGES DOWN TO 3/16 INCH IN NUMEROUS AREAS



DIAPHS. HAVE SURFACE RUST AND PAINT. PEEL.



THE WEST APPROACH SETTLED ALONG THE FILLFACE.



THE ASPHALT WEARING SURFACE IS BREAKING OUT IN ALL THREE SPANS, DECK IS REBOUNDING.



VEG. ALONG WHEELGUARDS HINDERING DRAINAGE.



LARGE PATCHING AND ASPHALT WEARING SURFACE BREAKING OUT IN THE RT. LANE AT THE EAST END OF SPAN 3.

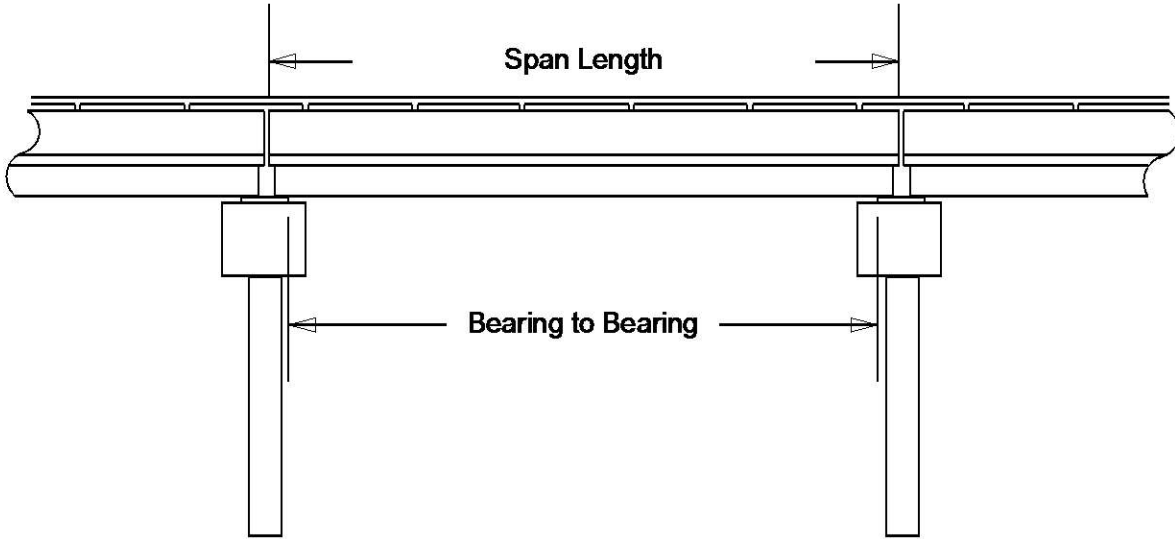


THE NORTHEAST PANEL BD. MISSING.

Structure Data Worksheet

Spans

County: GASTON Structure No: 350028 Date: 06/18/2014 Inspected By: DCR



Span No	Span Length	Bearing to Bearing	Comments
1	30.333'	29.333 ft.	
2	30.167'	29.583 ft.	
3	30.333'	29.333 ft.	NBIS = 89'

Stream Bed Soundings

(See next sheet for profile sketch)

Bridge No: 350028 County: GASTON Date: 06/18/2014 By: DCR

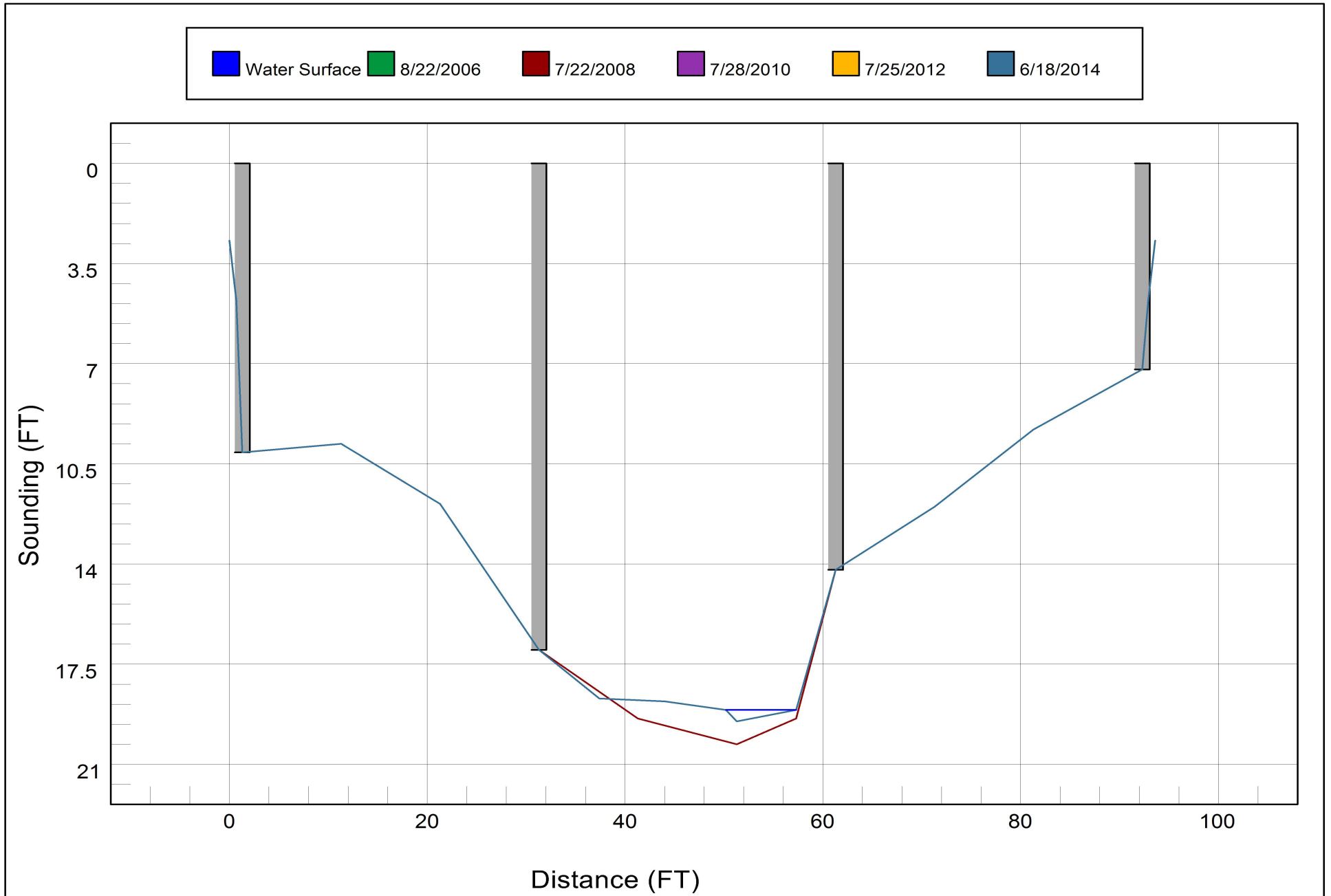
Record sounding from top of rail. Other location if needed: _____

Distance from Highwater Mark to top of rail: _____ Location of Highwater Mark: _____

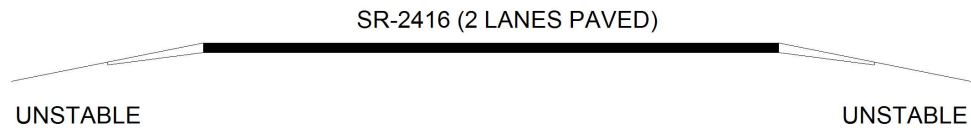
DOWNSTREAM			UPSTREAM		
Distance (Station) (ft)	Sounding (ft)	Description	Distance (Station) (ft)	Sounding (ft)	Description
0	2.7	FF ABUT 1			
0.7	4.8	ABUT 1			
1.3	10.1	SF ABUTMENT 1	1.3	8.8	SF ABUT 1
11.3	9.8	SLOPE			
21.3	11.9	SLOPE			
31.3	17	BENT 1	31.3	13.4	BENT 1
37.4	18.7	SOUNDING			
44	18.8	SOUNDING			
50.2	19.1	WSWE			
51.3	19.5	DEEPEST POINT			
57.3	19.1	WSWE			
61.3	14.2	BENT 2	61.3	17.0	BENT 2
71.3	12	SLOPE			
81.3	9.3	SLOPE			
92.3	7.2	SF ABUTMENT 2	92.3	8.6	SF ABUT 2
92.9	4.8	ABUT 2			
93.6	2.7	FF ABUT 2			

STREAMBED PROFILE (Downstream)

Top of Rail = 0 FT (Sounding)



Bridge Inspection Field Sketch



Roadway	18ft Wide	2 Paved Lanes	Looking East
Left Shoulder	4ft Wide		4ft Unpaved
Right Shoulder	4ft Wide		4ft Unpaved
Left Guardrail			
Right Guardrail			

VERIFIED BY ERIC PATTERSON ON 6-17-2014

Title

APPROACH ROADWAY

Description

LOOKING EAST

Bridge No: 350028

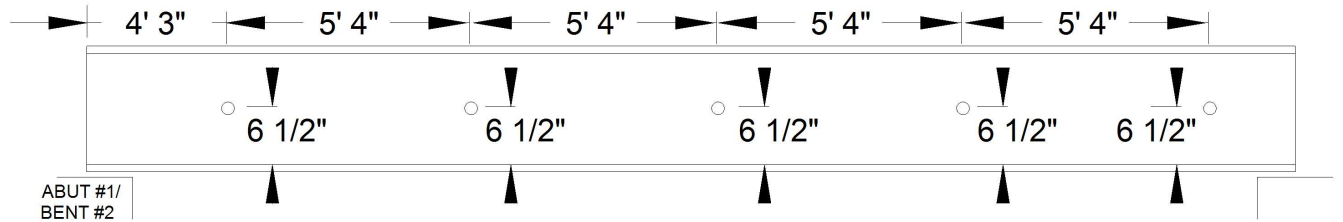
Drawn By: DJA

Date: 7/15/2008

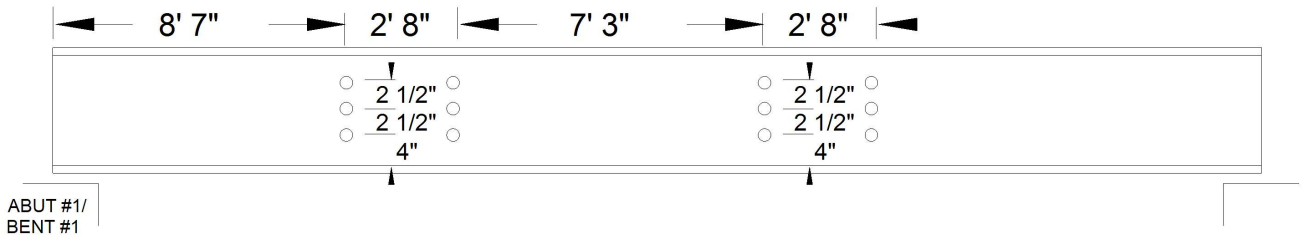
File Name: S0146030466

Bridge Inspection Field Sketch

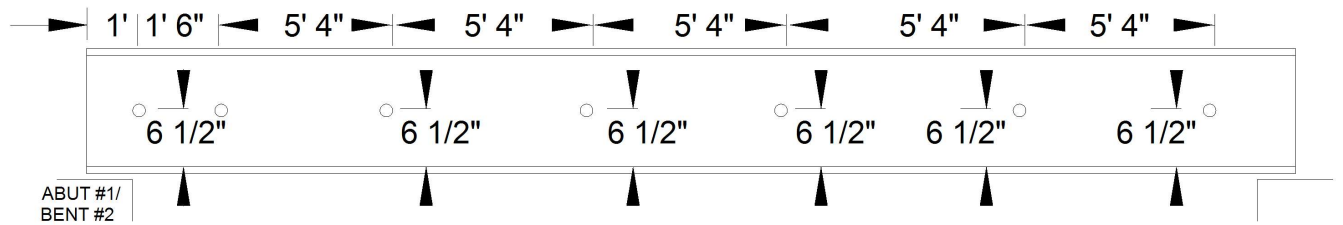
SPAN #1, BEAM #1
SPAN #3, BEAM #2



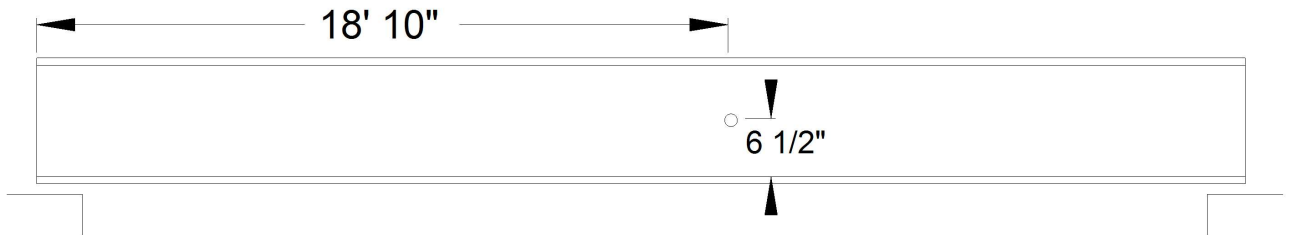
SPAN #1, BEAMS #2 & 3
SPAN #2, BEAM #10



SPAN #2, BEAM #1



SPAN #3, BEAM #1

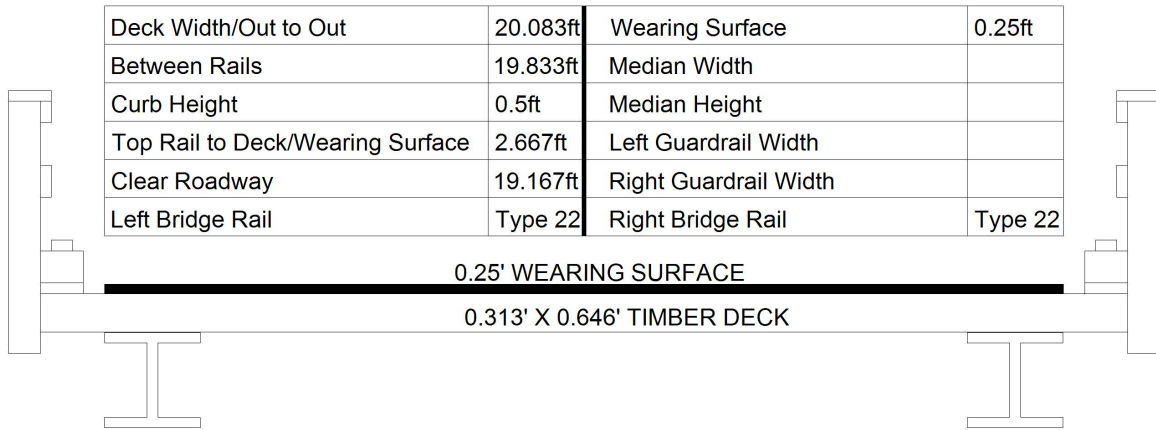


VERIFIED BY ERIC PATTERSON ON 6-17-2014

Title		Description	
DRILLED HOLES IN BEAM WEBS		HOLE LOCATIONS	
Bridge No: 350028	Drawn By: DJA	Date: 7/15/2008	File Name: S0146031486

Bridge Inspection Field Sketch

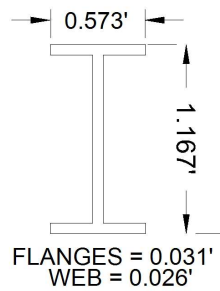
RAIL TYPE : 22



Measurements for Span #	1		
Deck Thickness	0.313	Left Overhang	1
Top of Rail to Bottom of Beam	4.75	Right Overhang	1

Beam No	Beam Type	Spacing	Comments
1	Steel I Beam	2.0 ft.	
2	Steel I Beam	2.0 ft.	
3	Steel I Beam	2.0 ft.	
4	Steel I Beam	2.0 ft.	
5	Steel I Beam	2.0 ft.	
6	Steel I Beam	2.0 ft.	
7	Steel I Beam	2.0 ft.	
8	Steel I Beam	2.0 ft.	
9	Steel I Beam	2.0 ft.	
10	Steel I Beam		

BEAMS
(NON-TAPERED FLANGES)



SEE ATTACHED SKETCH FOR DIAPHRAGM DETAILS
SEE ATTACHED SKETCHES FOR DETAILS ON DRILLED HOLES IN BEAM BOTTOM FLANGES
AND BEAM WEBS

VERIFIED BY ERIC PATTERSON ON 6-17-2014

Title

DECK DIMENSIONS

Description

SUPERSTRUCTURE

Bridge No: 350028

Drawn By: DJA

Date: 7/15/2008

File Name: S0146030467

Bridge Inspection Field Sketch

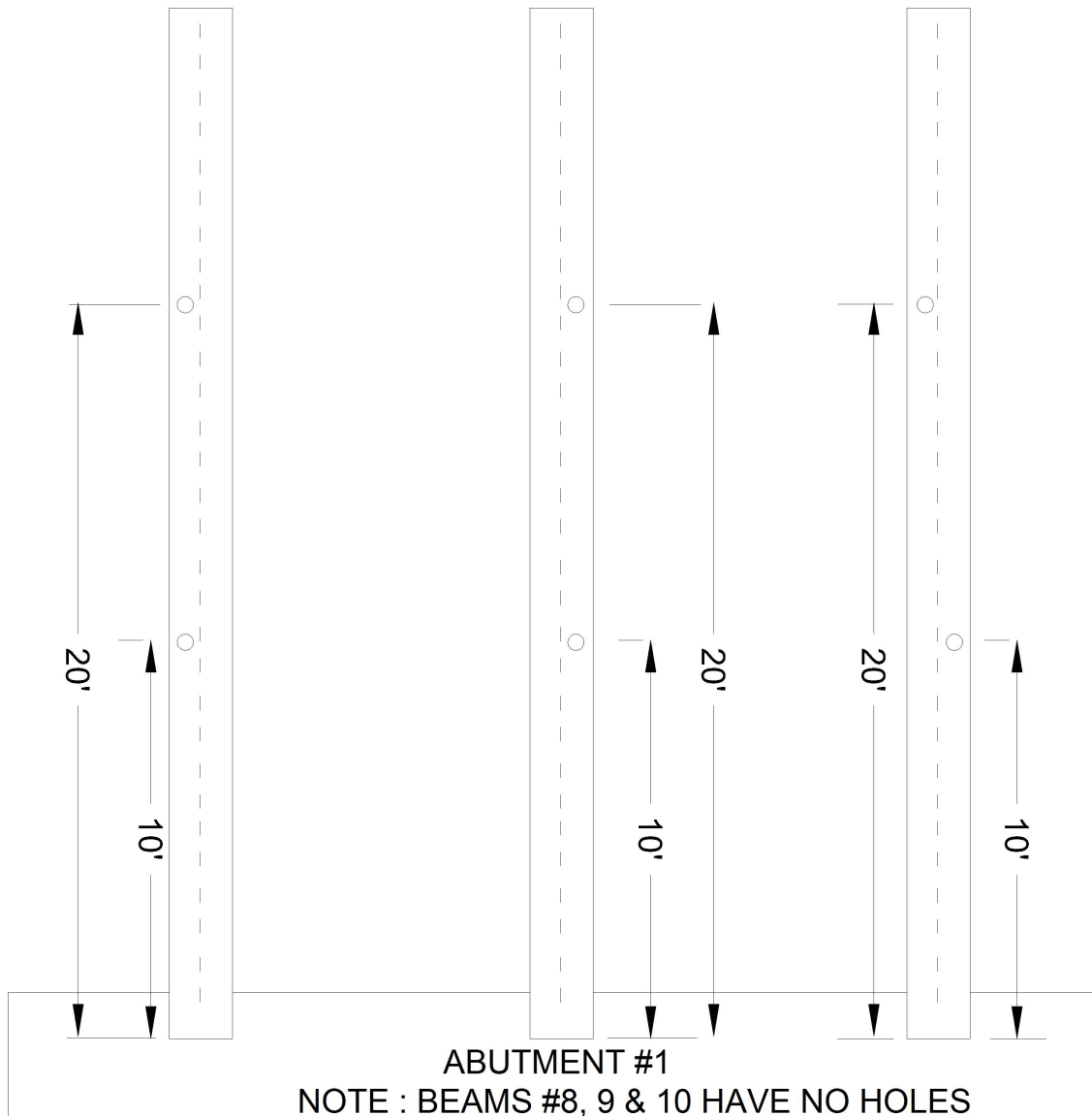
SPAN #1 BOTTOM FLANGES HAVE 0.057' DRILLED HOLES

NOTE : ALL HOLES ARE 0.083' FROM EDGE OF FLANGE TO EDGE OF HOLE EXCEPT FIRST HOLE IN BEAM #3 WHICH IS 0.042'

BEAMS # 1, 2 & 4

BEAMS # 3, 5, 6 & 7

BEAM # 10



ABUTMENT #1
NOTE : BEAMS #8, 9 & 10 HAVE NO HOLES

VERIFIED BY ERIC PATTERSON ON 6-17-2014

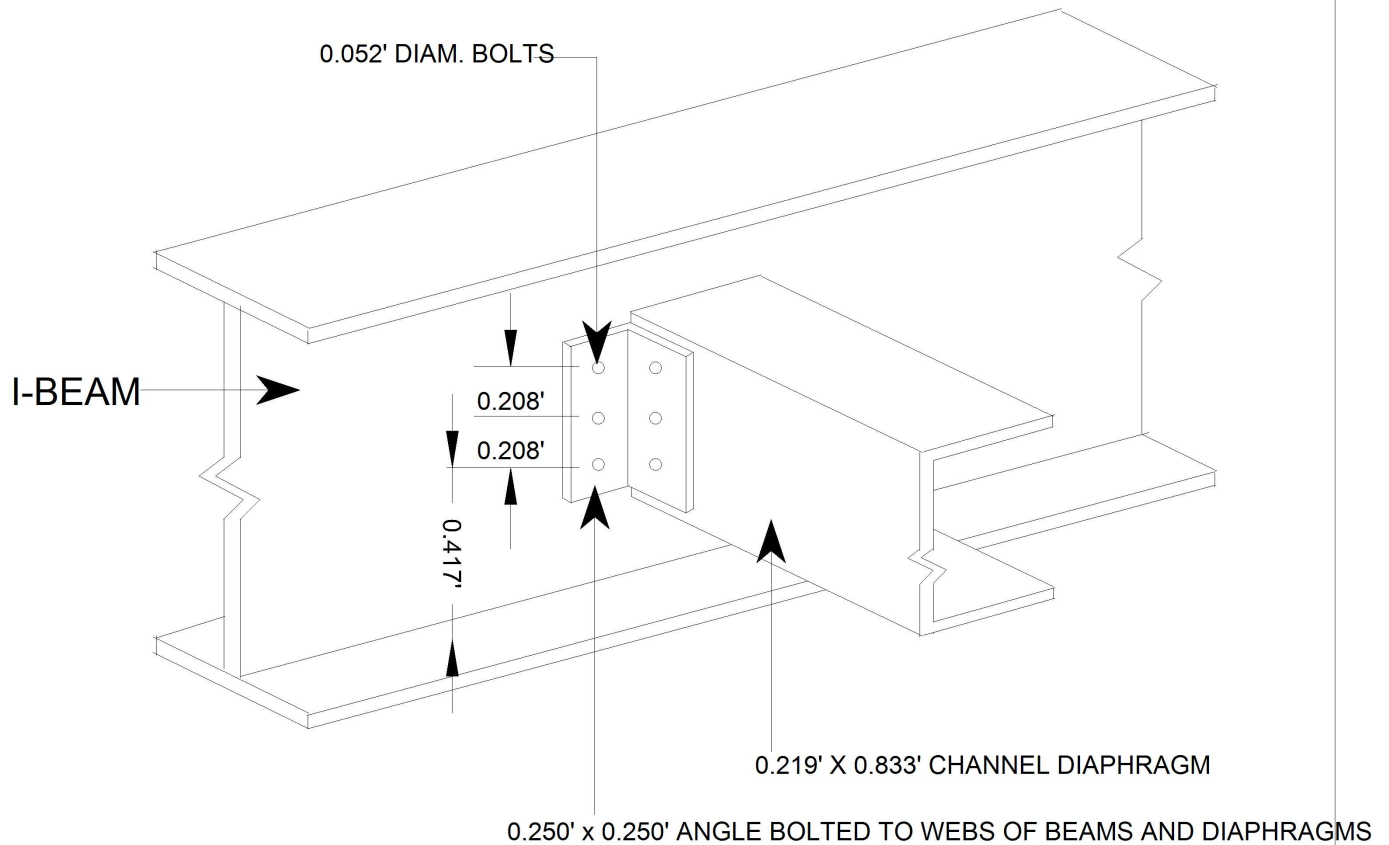
Title HOLES IN BOTTOM FLANGES		Description HOLES IN SPAN #1 BOTTOM FLANGES	
Bridge No: 350028	Drawn By: DJA	Date: 7/15/2008	File Name: S0146030468

Bridge Inspection Field Sketch

DIAPHRAGM DETAILS

SPANS : 1, 2 & 3

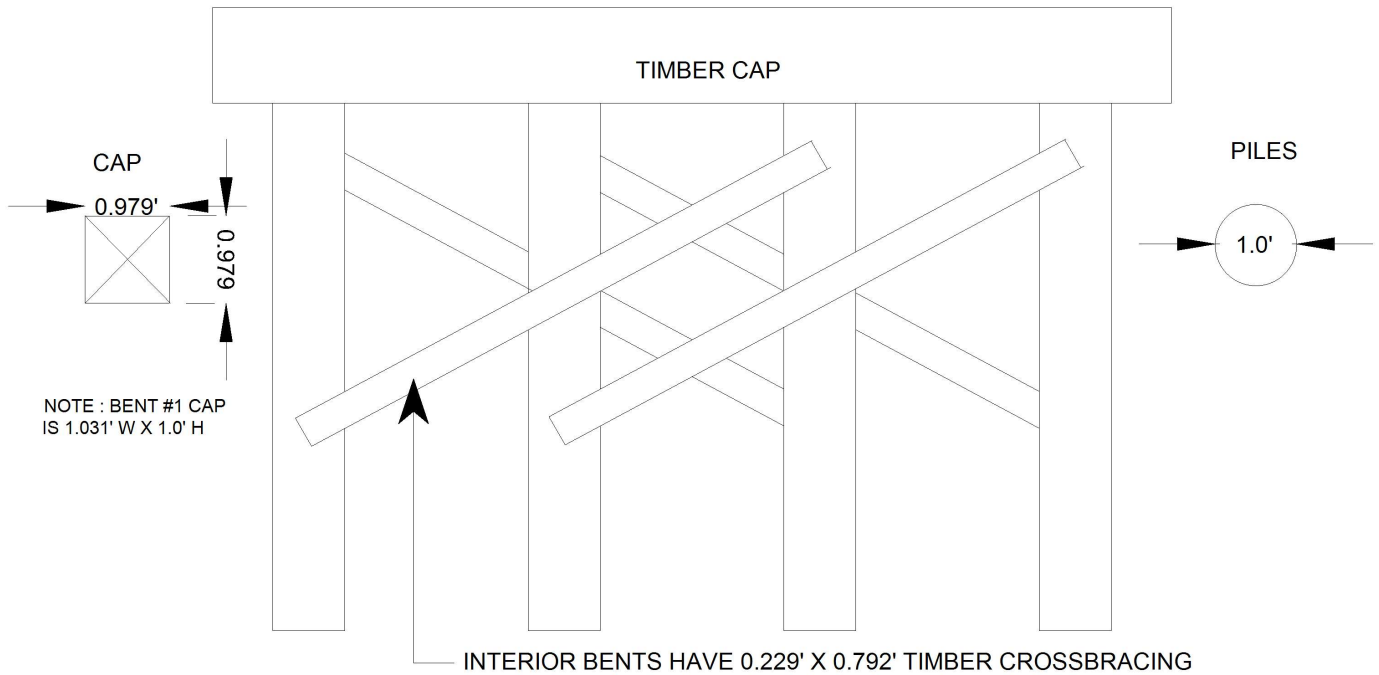
LOCATIONS : 10' AND 20' FROM BEAM ENDS AT
ABUTMENT #1 AND BENTS #1 & 2



VERIFIED BY ERIC PATTERSON ON 6-17-2014

Title		Description	
DIAPHRAGM DETAILS		DIAPHRAGMS	
Bridge No: 350028	Drawn By: DJA	Date: 7/15/2008	File Name: S0146030469

Bridge Inspection Field Sketch



Bent #	2	Abuts 1,2 similar	
Cap - Beam Type (Wood or Steel)			
Cap Size	19.8ft Long	0.979ft Wide	0.979ft High
Left Overhang	0.833ft	Lt Cap/Beam Overhang	0.833ft
Right Overhang	0.833ft	Rt Cap/Beam Overhang	0.833ft

Pile #	Material	Pile Type	Spacing	Length	Width/Diam.	Height	Orientation
1	Wood or Timber	Pile Bent	6.0'		1.0'		Vertical
2	Wood or Timber	Pile Bent	6.0'		1.0'		Vertical
3	Wood or Timber	Pile Bent	6.0'		1.0'		Vertical
4	Wood or Timber	Pile Bent			1.0'		Vertical

VERIFIED BY ERIC PATTERSON ON 6-17-2014

Title

BENT #2 AND ABUTMENTS

Description

PILE DETAILS

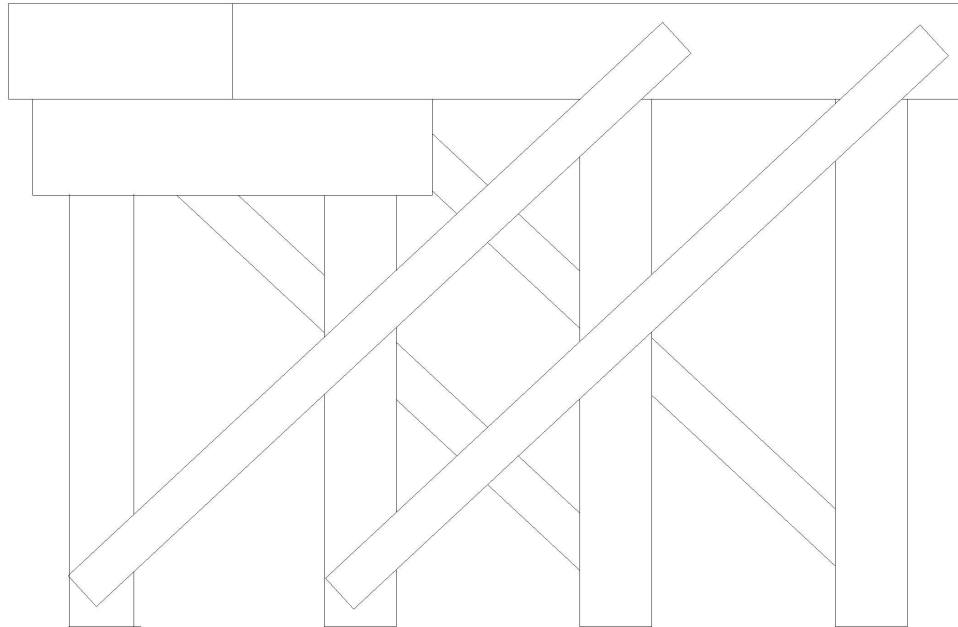
Bridge No: 350028

Drawn By: DJA

Date: 7/15/2008

File Name: S0146030470

Bridge Inspection Field Sketch



Bent #	1	Bents 0 similar	
Cap - Beam Type (Wood or Steel)			
Cap Size	19.8ft Long	0.979ft Wide	0.979ft High
Left Overhang	0.833ft	Lt Cap/Beam Overhang	0.833ft
Right Overhang	0.833ft	Rt Cap/Beam Overhang	0.833ft
Timber Sub Cap			
Size	8ft Long	0.979ft Wide	0.979ft High
Left pile to splice	1ft		
Left Overhang	1.333ft		
Right Overhang	0.667ft		

Pile #	Material	Pile Type	Spacing	Length	Width/Diam.	Height	Orientation
1	Wood or Timber	Pile Bent	6.0'		1.0		Vertical
2	Wood or Timber	Pile Bent	6.0'		1.0		Vertical
3	Wood or Timber	Pile Bent	6.0'		1.0		Vertical
4	Wood or Timber	Pile Bent			1.0		Vertical

VERIFIED BY ERIC PATTERSON ON 6-17-2014

Title BENT #1	Description PILE DETAILS
Bridge No: 350028	Drawn By: DJA
Date: 7/15/2008	File Name: S0142000835



EAST APPROACH



ABUT. 2



BENT 1



BENT 2



DOWNSTREAM



UPSTREAM



ABUT. 1



WEST APPROACH



LOOKING UPSTREAM



LOOKING DOWNSTREAM